

Scoping of a Global Knowledge Support Service for Biodiversity

Overview

Introduction

Supporting national capacity on biodiversity data, information, and knowledge

Options for enhanced cooperation:

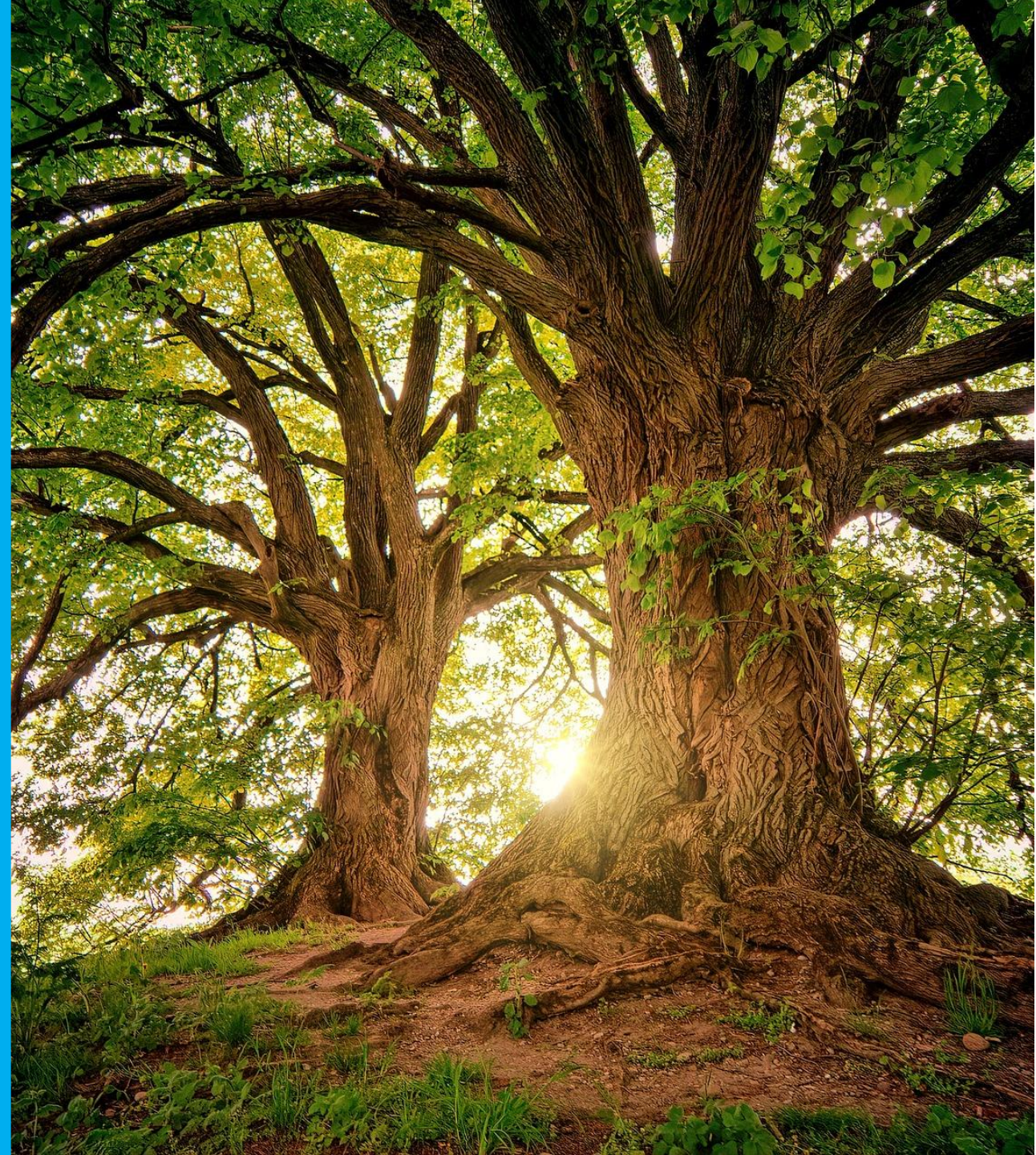
1. Invest in national biodiversity institutions
2. Interoperability and data sharing
3. Enhance collaboration at regional and global levels

Consultation process

[Documents | Global Knowledge Support Service for Biodiversity \(chm-cbd.net\)](#)

Introduction

- Throughout COP15, Parties noted the need for capacity-building and technical and scientific cooperation
- UNEP-WCMC, in collaboration with others, is facilitating consultations of this initiative.



COP15 Decision 15/8

1. to establish regional and/or subregional capacity-building centres;
2. to establish a mechanism comprising a network of regional, and/or additional subregional technical and scientific cooperation support;
3. to establish an informal advisory group on technical and scientific cooperation;
4. that the modalities for operationalization of the global coordination entity will be developed by the Subsidiary Body on Implementation;



Needs expressed to date...

- Enhance uptake of biodiversity data across all of society (data for action)
- Provide facilitated access to biodiversity and tools
- Accelerate digitisation, standardisation and interoperability
- Strengthen **national** biodiversity knowledge management capacities:
 - Collaborative approaches
 - Coordinated approaches
 - Biodiversity Information Systems
 - Knowledge management



Options for enhanced cooperation

1. Support national biodiversity institutions

National data
+ global
resources

Upgrade
information
systems

Planning,
policies and
accounts

Monitoring &
reporting
progress

2. Accelerate digital transformation and interoperability of data and tools

Data standards

National DT
strategies

Peer-to-peer
support

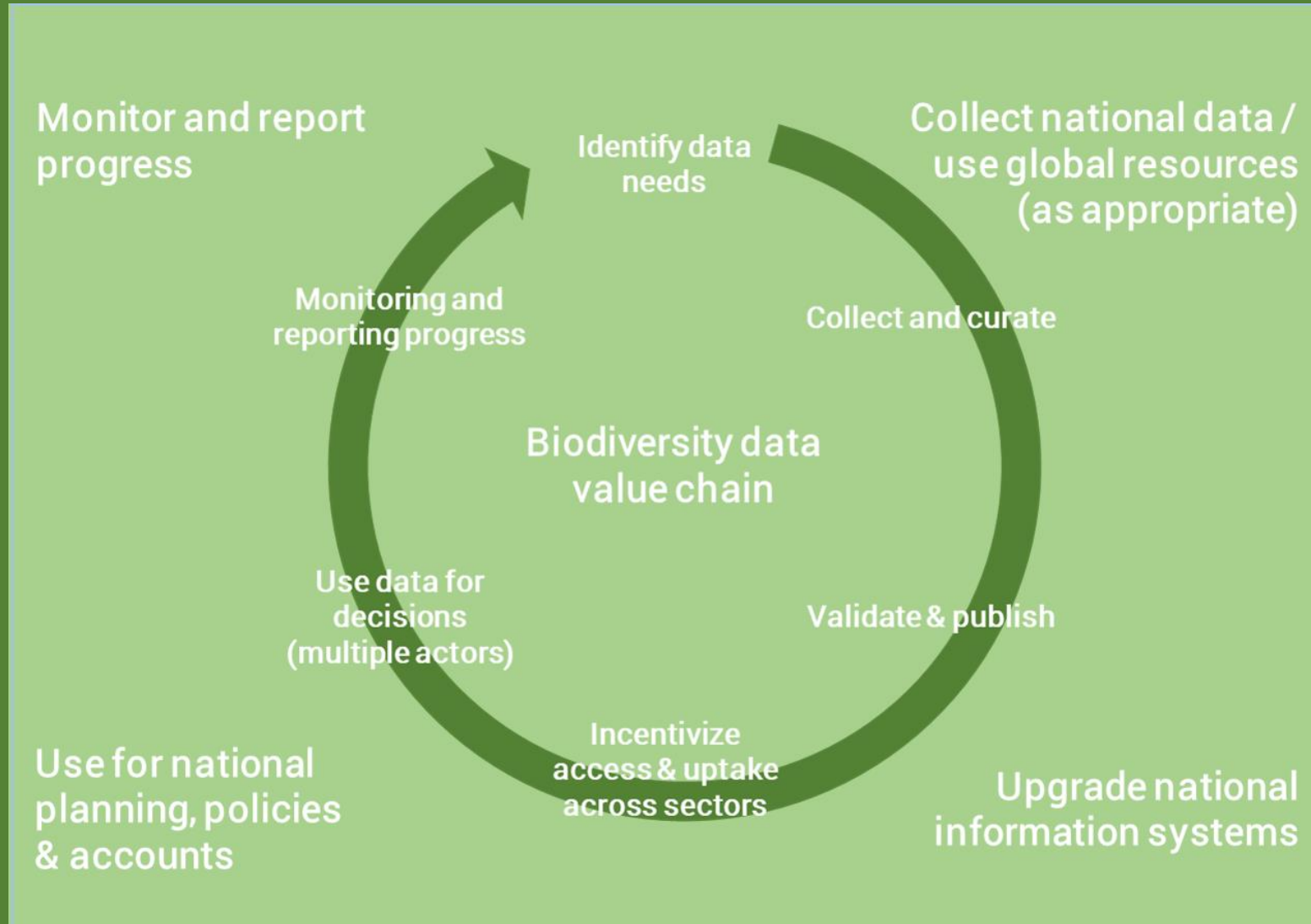
3. Enhance collaboration at the regional and global levels

Engage Regional
Commissions

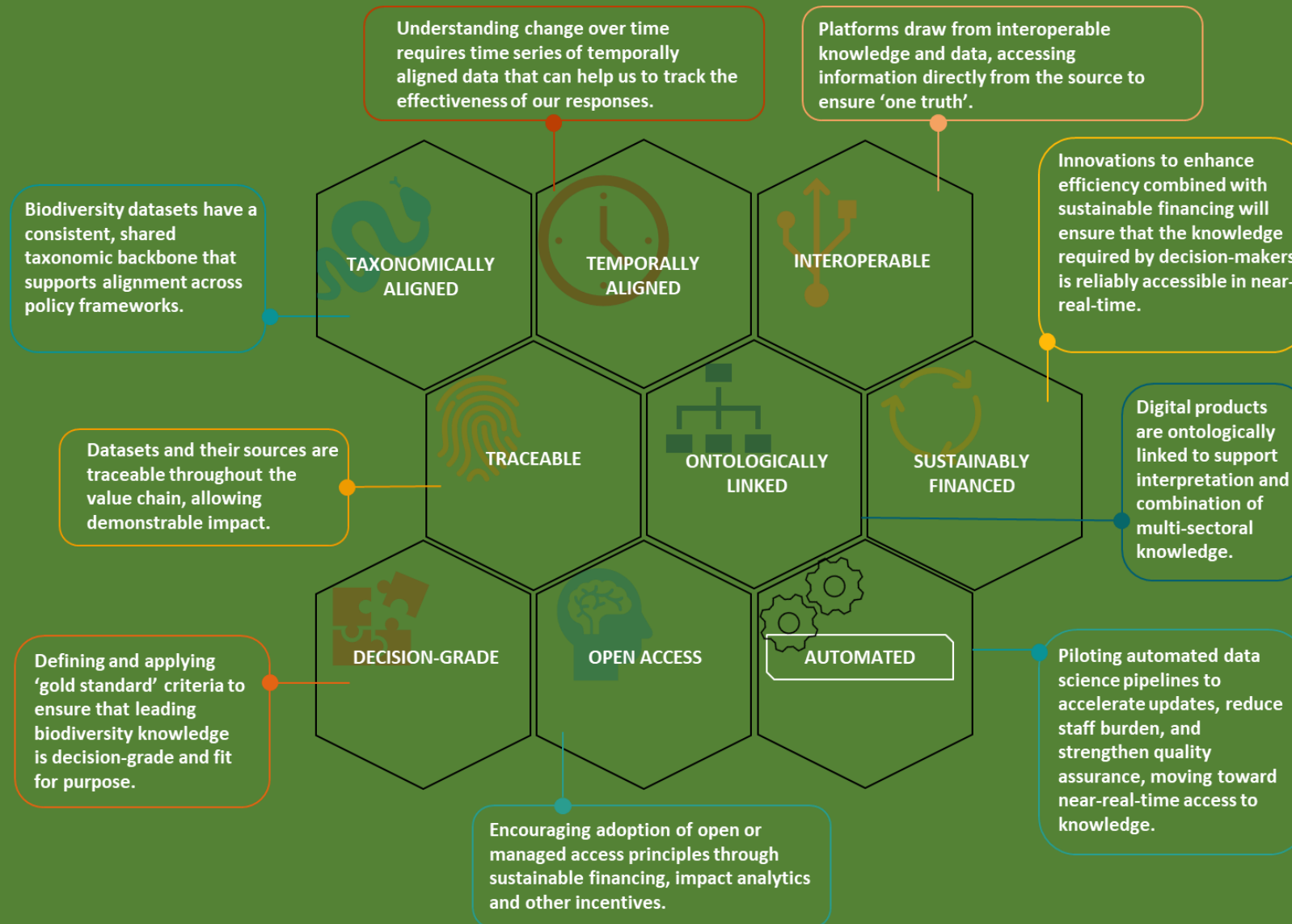
Align with SDG
mechanisms &
UNSEEA

NBSAP Learning
& training
services

#1. Invest in national biodiversity institutions



#2. Interoperability and data-sharing

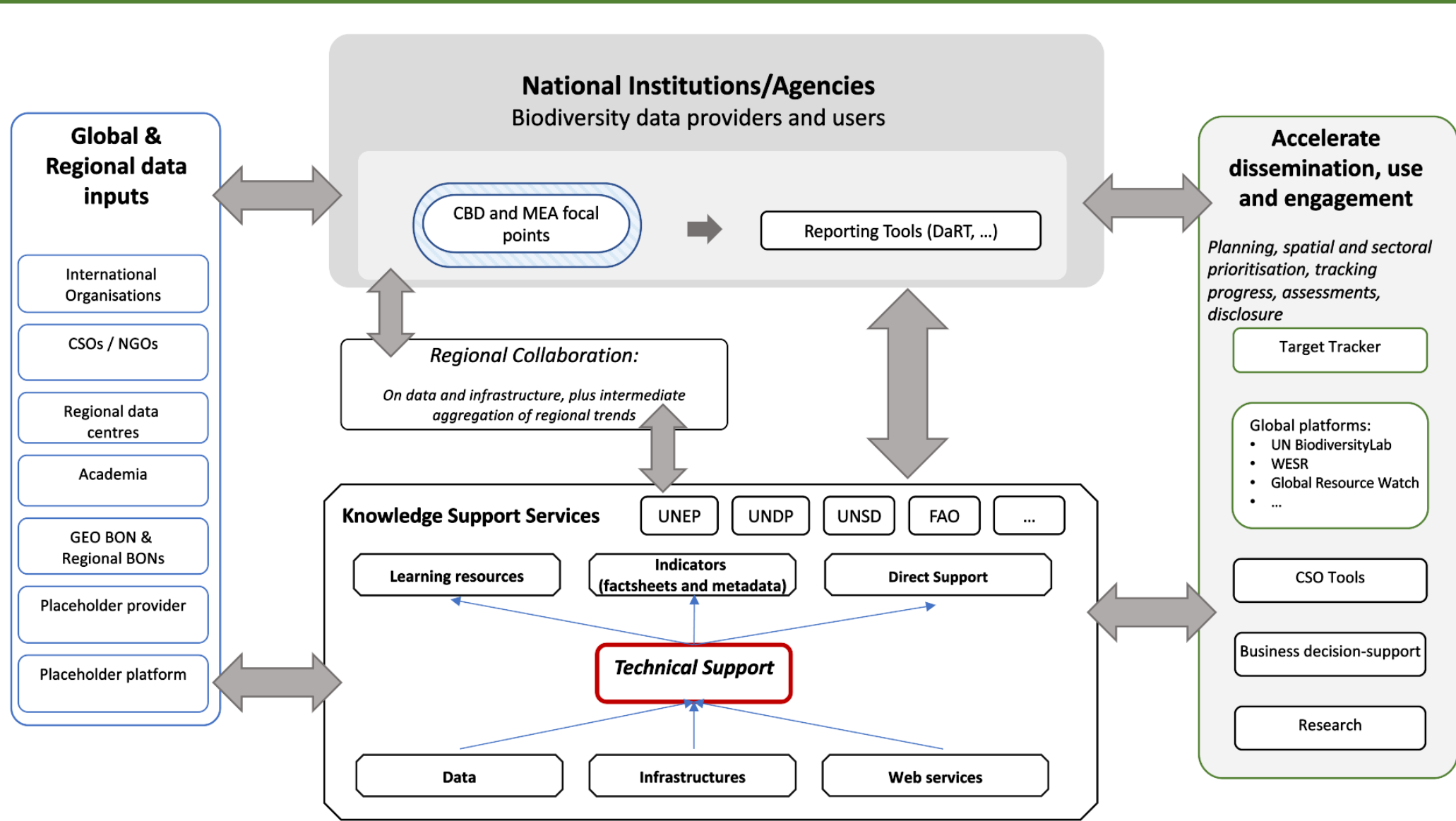


#3. Collaboration at regional and global levels

- Enhance collaboration and support
- Align data approaches
- Learning and training services



Enhanced cooperation on biodiversity data, information and knowledge





Consultations continue...

Impartial consultative process – we need your input:

- Informal advisory group
- Bilateral consultations July-December 2022
- CBD COP15 side event
- Consultation phase will continue in Q2/2023, including surveys and questionnaires to Parties to the CBD
- Co-design workshop (April 2023)
- Draft design circulated for review and feedback



Corli.Pretorius@unep-wcmc.org

Co-design workshop for the Global Knowledge Support Service for Biodiversity

Natasha Ali, UNEP-WCMC

A co-design workshop is planned from 18 – 21 April 2023 in Cambridge, UK

Hybrid meeting

Aim: to gather further views on the Global Knowledge Support Service and build common understanding

Workshop builds on consultations, to refine elements for enhanced cooperation & collaboration on data, knowledge & tools at national, regional, and global levels



Draft Programme

- Framing and strategic intent of a knowledge support service;
 - Technical scope and opportunities for digital transformation
 - Public good data criteria and data governance
 - Governance options for a knowledge support service;
 - Linkages to other initiatives and decisions.
-



Modus Operandi

- Hybrid meeting to accommodate virtual participation
 - Regional & gender balance
 - Data users and data providers
 - Shared examples of processes, activities with data, knowledge needs, resources, and workflows
 - Continued opportunity to comment and input to the framing of the Service
-





gkssb-info@unep-wcmc.org

Written inputs by 5th April